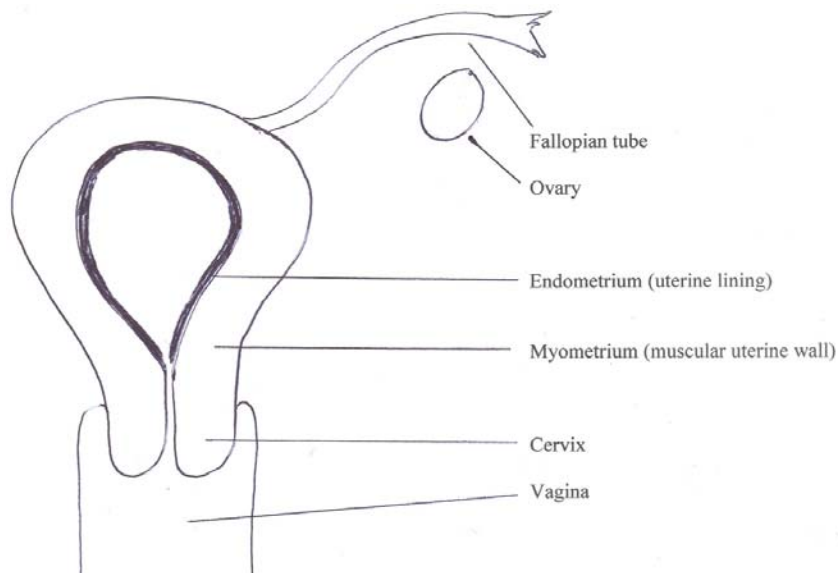


ADVANCED WOMEN'S HEALTH CARE

The office of Dr. Martin L. Robbins

Diagnostic Hysteroscopy –

This outpatient procedure involves looking into the uterine cavity with a tube with a fiber-optic light. Since there is no incision, there is hardly any discomfort, and regular activities can be resumed immediately. A traditional Dilatation and Curettage, “D&C”, will miss up to 60% of the surface area of the uterine cavity. Hysteroscopy allows visualization of the entire uterine cavity. This procedure allows the surgeon to diagnose and treat abnormal uterine bleeding. Normalizing the uterine cavity will also help the chance of conceiving.

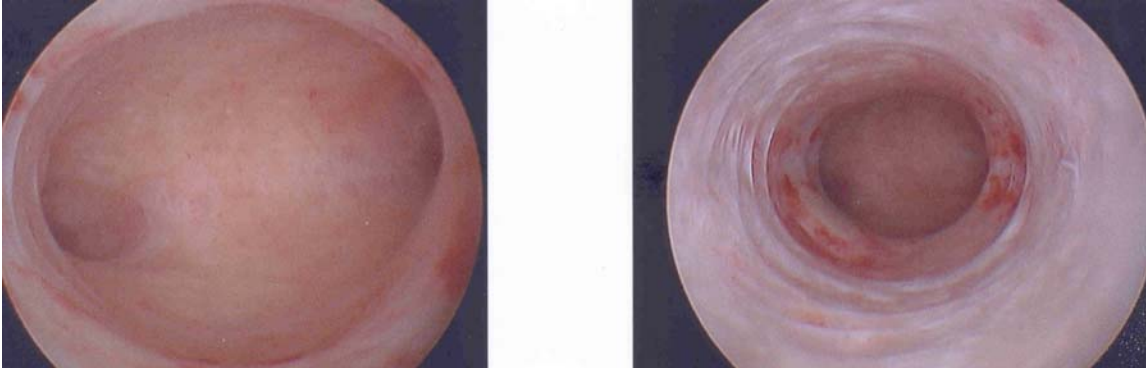


The uterus is a thick-walled muscular organ. The inside lining of the uterus is the endometrium (“metri” means uterus, and “endo” refers to inside lining). The endometrium responds to hormones from the ovaries. Every month the endometrium grows, sheds, and bleeds, and this is the menstrual period. Anything that is going to effect how much a woman bleeds has to involve or be right next to the uterine lining, or endometrium.

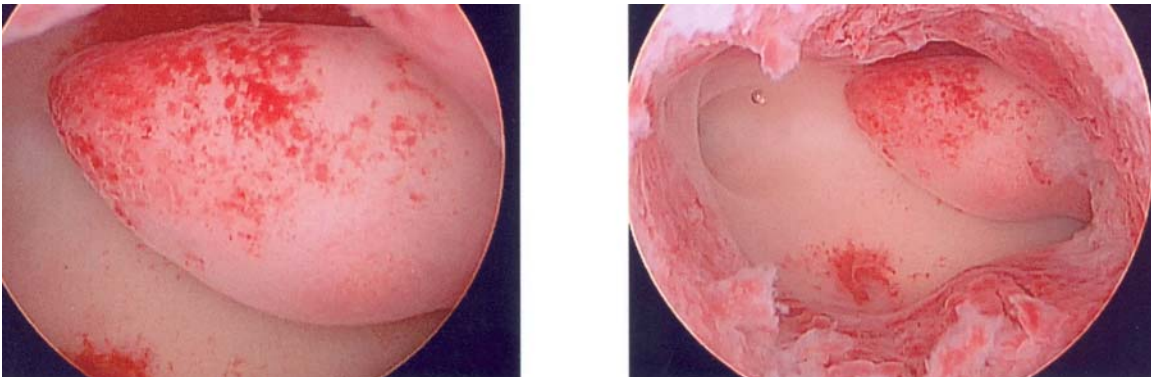
308 US Route One
Scarborough, Maine 04074
Phone - (207) 883-3883
Fax - (207) 883-5788

ADVANCED WOMEN'S HEALTH CARE

The office of Dr. Martin L. Robbins



The uterine cavity and cervical canal.
The inside lining of the uterine cavity is the endometrium.

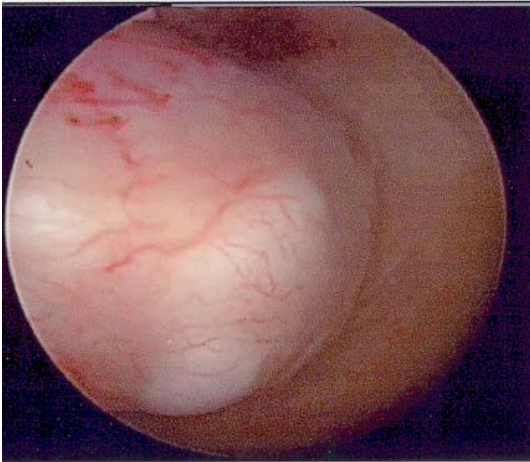


Endometrial polyp.

308 US Route One
Scarborough, Maine 04074
Phone - (207) 883-3883
Fax - (207) 883-5788

ADVANCED WOMEN'S HEALTH CARE

The office of Dr. Martin L. Robbins



submucous fibroid

This uterine fibroid is located in the uterine cavity, and it is covered with endometrium.

308 US Route One
Scarborough, Maine 04074
Phone - (207) 883-3883
Fax - (207) 883-5788