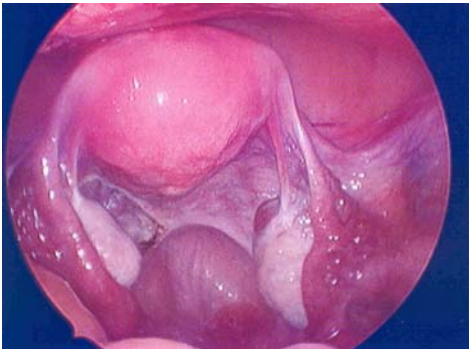


ADVANCED WOMEN'S HEALTH CARE

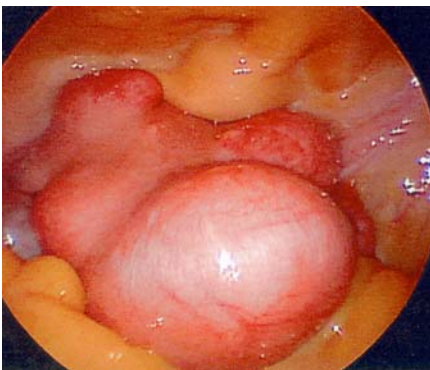
The office of Dr. Martin L. Robbins

Laparoscopic Supracervical Hysterectomy – LSH

This outpatient procedure involves laparoscopic removal of the uterine body, and the patient is able to keep her cervix. The patient can either keep her ovaries or have them removed at the same time. Pelvic supports are left intact. Since there is no vaginal incision, there is less contamination by vaginal bacteria. This outpatient approach is associated with less pain, fewer adhesions, and a quicker recovery than the open approach. This is a nice way to manage a large fibroid uterus without having to do a big incision. Other conditions, such as endometriosis and adhesions, can be treated at the same time.



Normal size uterus with normal ovaries and fallopian tubes.

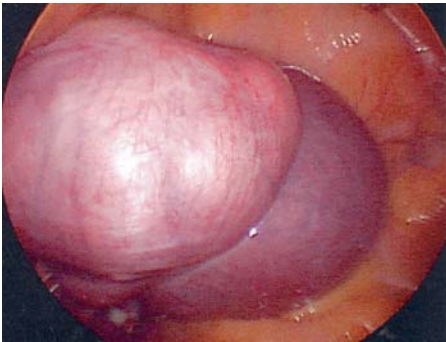


This is a large fibroid uterus with multiple fibroids filling the pelvic cavity.

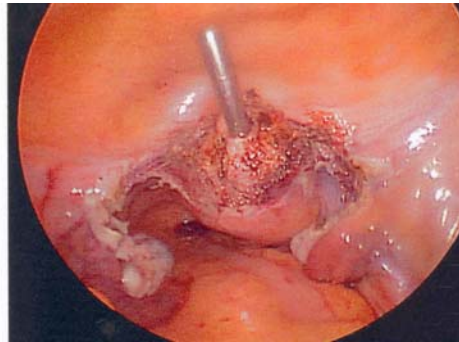
308 US Route One
Scarborough, Maine 04074
Phone - (207) 883-3883
Fax - (207) 883-5788

ADVANCED WOMEN'S HEALTH CARE

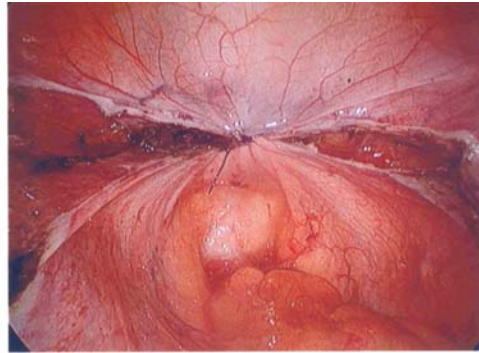
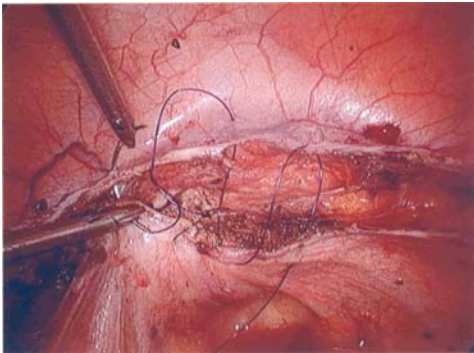
The office of Dr. Martin L. Robbins



In the picture on the left: the blood supply has been removed from the fibroid uterus.



In the picture on the right: the uterine manipulator is seen coming through the cervix and the uterine body and fibroids have been removed.



The cervix has been sutured closed. Now the peritoneum (lining of the body cavity) is being sutured to cover over the cervix. This helps to prevent adhesions to the cervix.

308 US Route One
Scarborough, Maine 04074
Phone - (207) 883-3883
Fax - (207) 883-5788